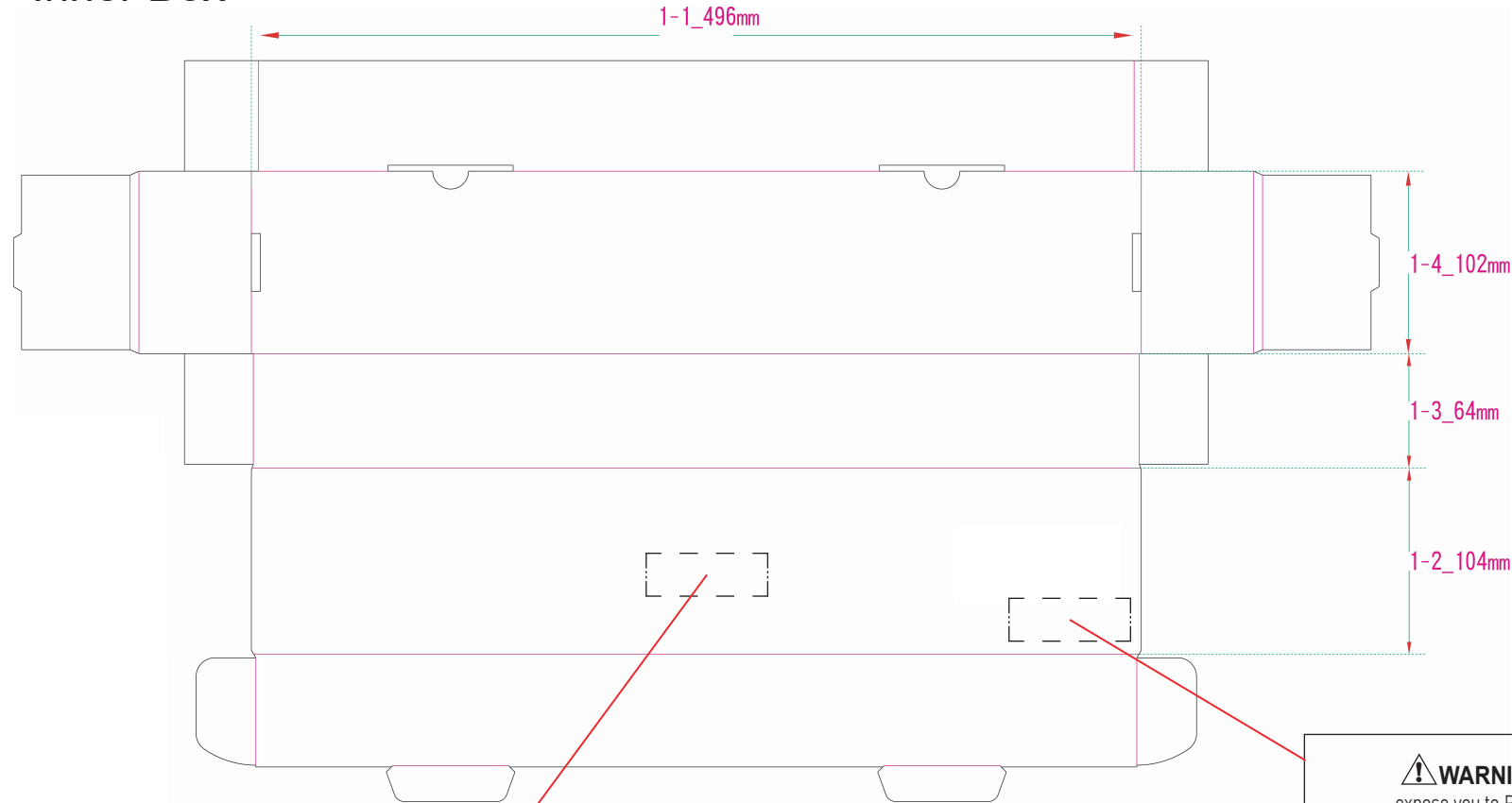


NOTE: ALL MATERIAL COMPLIANT ROHS STANDARD

REVISION INFORMATION			
Rev.	Rev. Date	Modified By	Brief Description
V0	03/18/2022	Mark	Initial issue
V1	03/24/2022	Mark	Changed outer box

Inner Box



Cat.6A 110 Type UTP
24Port Patch Panel
Rackmount UL Listed.
1 PC

70 mm

25 mm

⚠ WARNING: This product can expose you to Phthalates, which is known to the State of California to cause cancer and reproductive harm. For more information, go to www.P65warnings.ca.gov

70 mm

25 mm

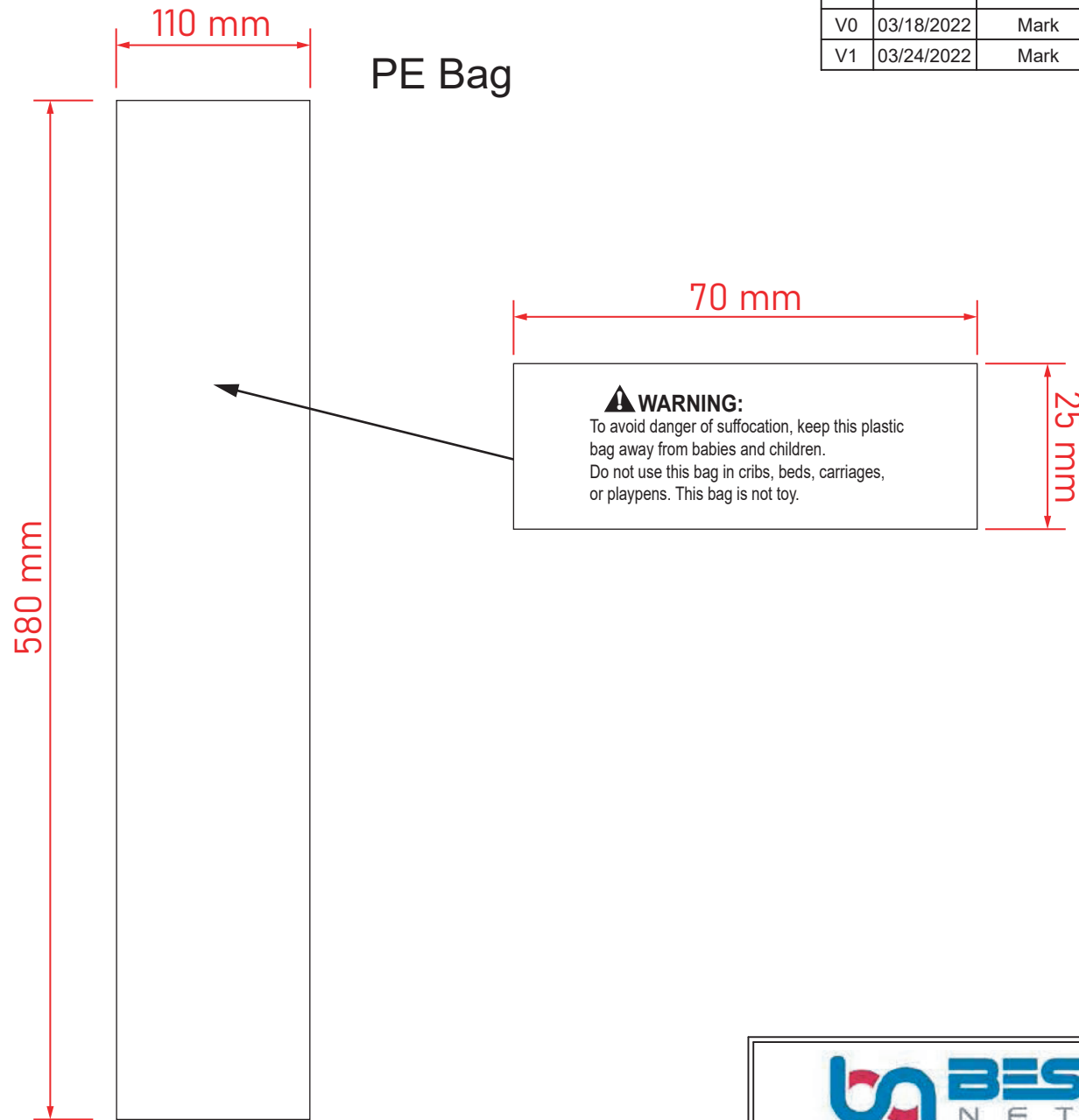


③	INSTRUCTION	210x297MM	1	PC	Unless specified on the drawing, tolerances are per the follows: .x +1 +0.2 .xx +0.05
②	I.D. PAPER	87x12.6MM	4	PCS	
①	CABLE TIE	2.5*101MM	8	PCS	
NO.	PART NAME	SPECIFICATION DESCRIPTION	QT'Y	UNIT	

DRAWN BY	Mark	DATE:	03/24/2022	DESCRIPTION: Cat.6A 110 Type UTP 24Port Patch Panel Rackmount UL Listed.	
CHECKED BY		SHEET 2 of 4		ITEM NO. 102200	
APPROVED BY		SCALE 1:4	REV. 01	UNIT: mm	

NOTE: ALL MATERIAL COMPLIANT ROHS STANDARD

REVISION INFORMATION			
Rev.	Rev. Date	Modified By	Brief Description
V0	03/18/2022	Mark	Initial issue
V1	03/24/2022	Mark	Changed outer box



③	INSTRUCTION	210x297MM	1	PC
②	I.D. PAPER	87x12.6MM	4	PCS
①	CABLE TIE	2.5*101MM	8	PCS
NO.	PART NAME	SPECIFICATION DESCRIPTION	QT'Y	UNIT

Unless specified on the drawing, tolerances are per the follows:

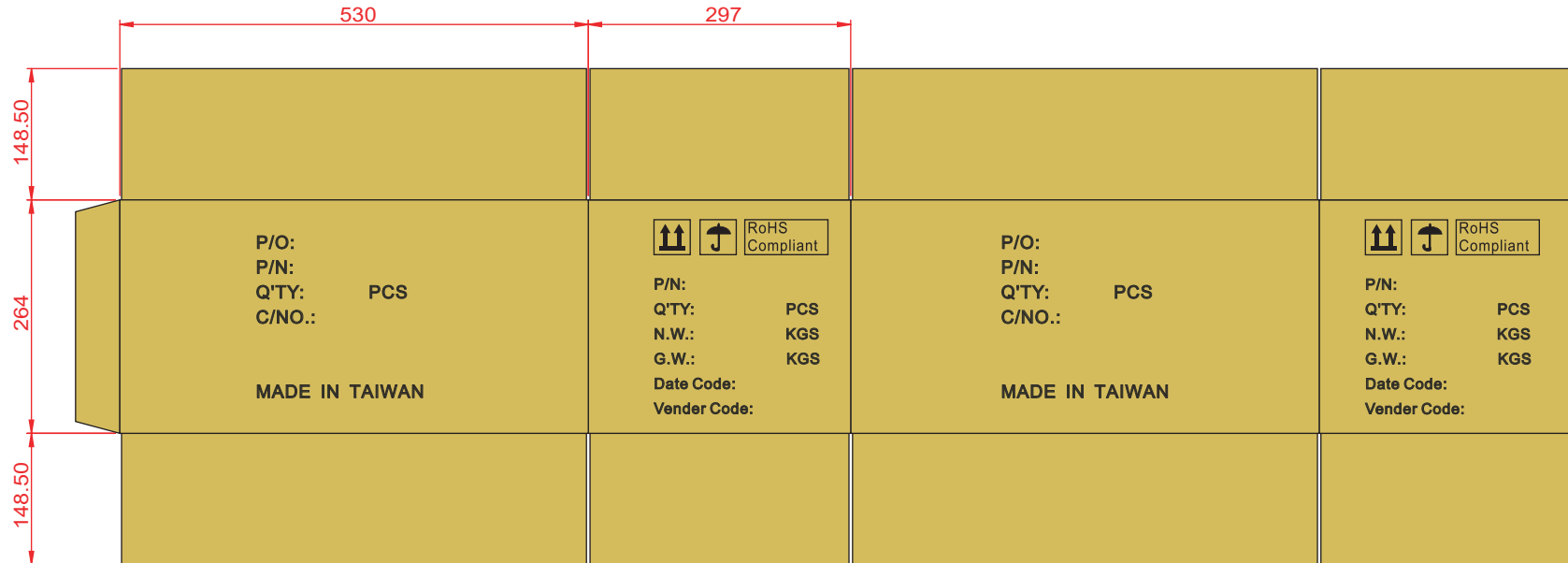
.	+1
.x	+0.2
.xx	+0.05

DRAWN BY	Mark	DATE:	03/24/2022	DESCRIPTION: Cat.6A 110 Type UTP 24Port Patch Panel Rackmount UL Listed.	
CHECKED BY		SHEET	3 of 4	ITEM NO. 102200	
APPROVED BY		SCALE	1:4	REV.	01
		UNIT:	mm		

NOTE: ALL MATERIAL COMPLIANT ROHS STANDARD

REVISION INFORMATION			
Rev.	Rev. Date	Modified By	Brief Description
V0	03/18/2022	Mark	Initial issue
V1	03/24/2022	Mark	Changed outer box

Outer Box



③	INSTRUCTION	210x297MM	15	PCS
②	I.D. PAPER	87x12.6MM	60	PCS
①	CABLE TIE	2.5*101MM	120	PCS
NO.	PART NAME	SPECIFICATION DESCRIPTION	QT'Y	UNIT

Unless specified on the drawing, tolerances are per the follows:

. +1
 .x +0.2
 .xx +0.05

DRAWN BY	Mark	DATE:	03/24/2022	DESCRIPTION: Cat.6A 110 Type UTP 24Port Patch Panel, Rackmount UL Listed.	
CHECKED BY		SHEET 4 of 4	ITEM NO. 102200		
APPROVED BY		SCALE 1:8	REV. 01	UNIT:mm	