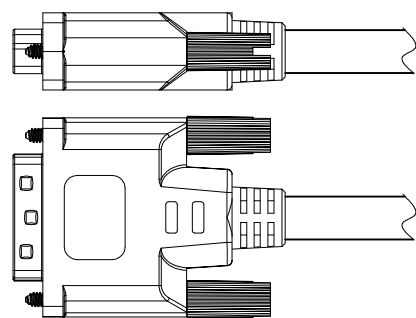
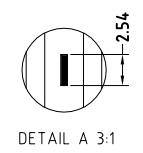
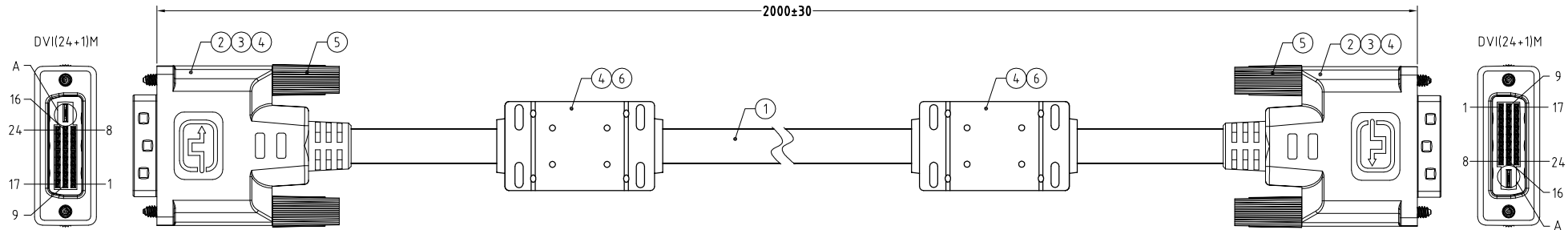


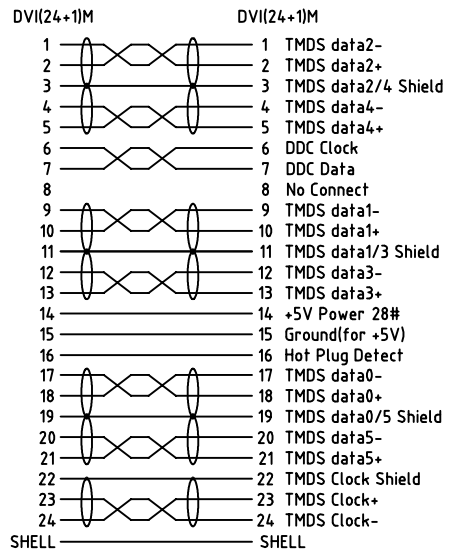
NOTE:ALL MATERIAL COMPLIANT ROHS STANDARD

REVISION INFORMATION

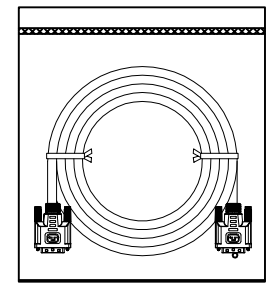
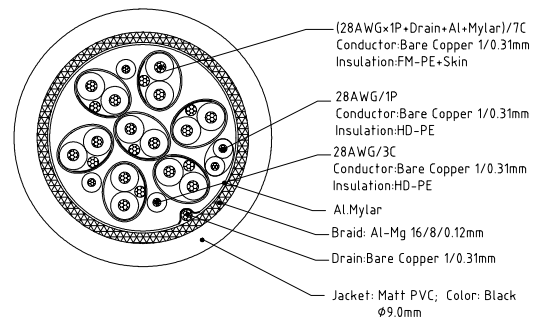
Rev.	Rev.Date	Modified By	Brief Description



PIN ASSIGNMENT:



Wire Details



- Electrical character:**
 1)100% Open/short/Intermittent testing
 2)Withstanding voltage:DC 300V AT 10ms.
 3)Insulation resistance:10M Ohm(min)
 4)Residual operating current:
 a.<1M=0.5mA; b.1.0~2.0M=1.0mA;
 c.2.0~3.0M=2.0mA; d.3.0~5.0M=3.0mA;
 e.5.0~10M=5.0mA; f.10~15M=7.0mA;
 5)Conductive resistance:3 Ohm(max)

NO.	PART NAME	SPECIFICATION DESCRIPTION	QTY	UNIT
⑥	Fe-core	17.5(OD)×10(ID)×28.0(L)mm	2	PCS
⑤	Thumbscrew	#4-4UNC,Ø2.8×L44.5mm,Nickel Plated	2	PCS
④	Overmold	PVC,45Pa,Black	N/A	G
③	Innermold	PE,Low density	N/A	G
②	DVI_Conn	DVI(24+1)M,PIN G/F,Black Insulation,Steel-Shell(G/F Plated),Solder type	1	PCS
①	Cable	UL20276 (28#BC/1P+D+A+M)/7C+28#BC/(1P+3C)+A+D+B+PVC,ØD9.0mm Jacket:Black	N/A	MM



DRAWN BY		DATE:	DESCRIPTION:
CHECKED BY		2014/05/30	DVI(24+1) M TO M Cable Ass'y,2m
APPROVED BY		SHEET 1 of 1	ITEM NO. 180654
SCALE None		REV. 00	UNIT: mm