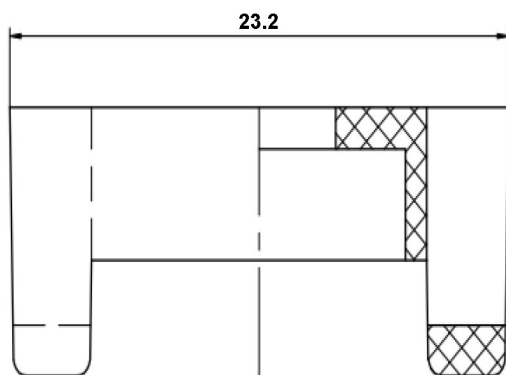
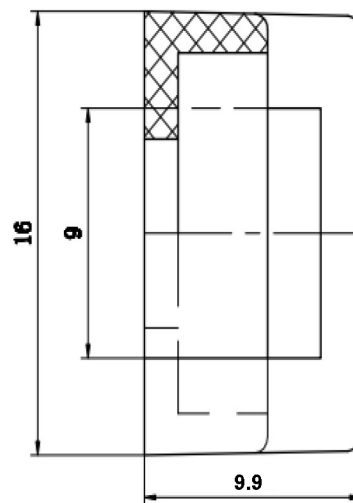
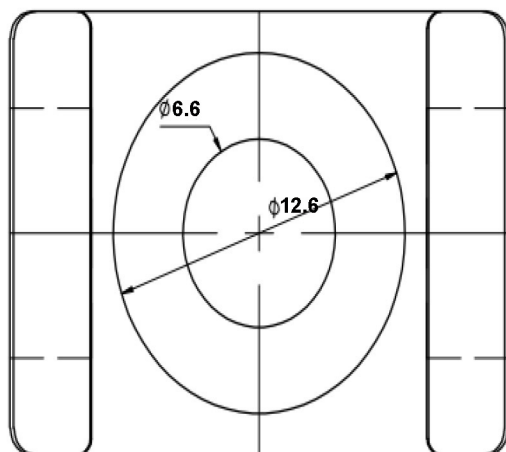


NOTE: ALL MATERIAL COMPLIANT ROHS STANDARD

REVISION INFORMATION

Rev.	Rev. Date	Modified By	Brief Description
			CTH-2B BLACK



Unless specified on the drawing, tolerances are per the follows:

- . +1
- .x +0.2
- .xx +0.05

DRAWN BY

DATE:

DESCRIPTION:

CTH-2B BLACK

CHECKED BY

SHEET 1 of 1

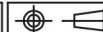
ITEM NO. 220320BK

APPROVED BY

SCALE 1:1

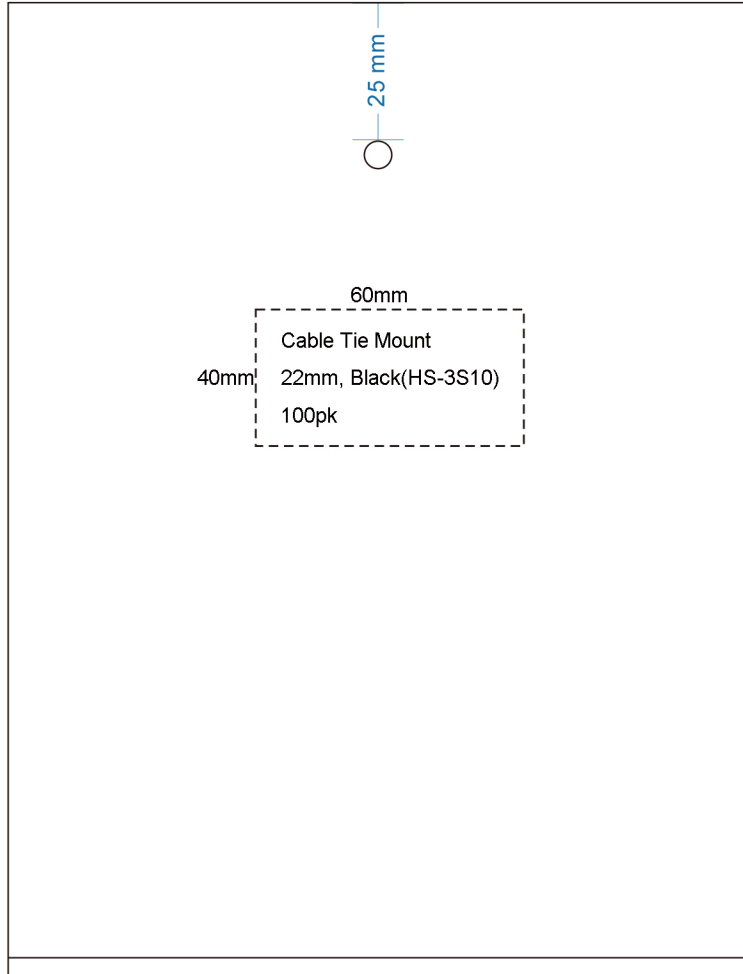
REV. 00

UNIT:mm

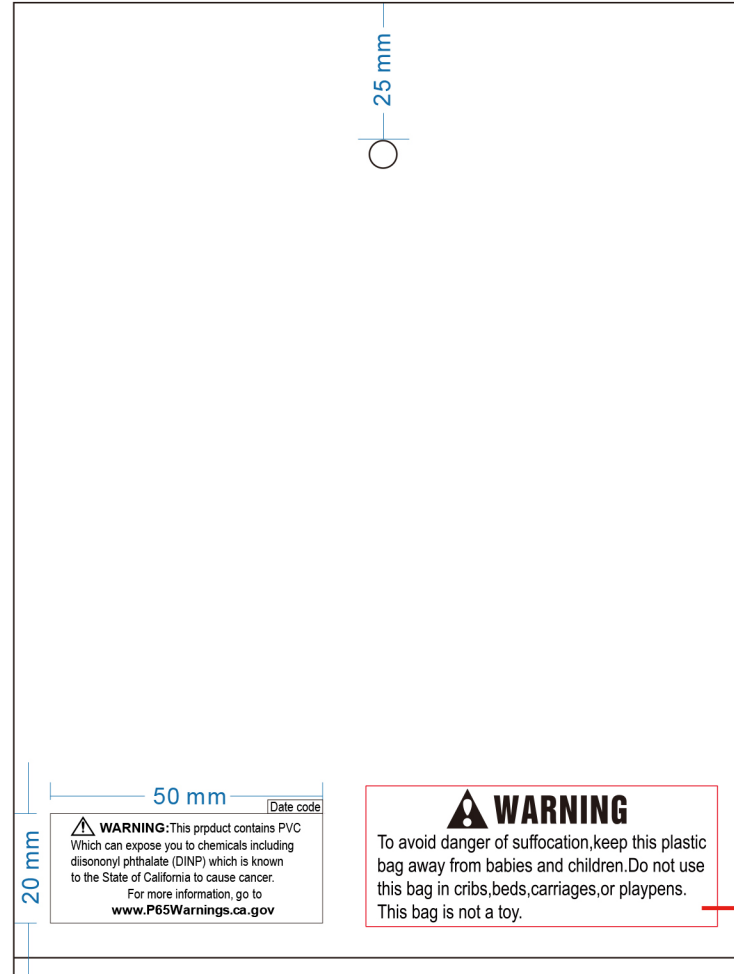


NO.	PART NAME	SPECIFICATION DESCRIPTION	QTY	UNIT
③				
②				
①				

front



back



Warning label 字體的大小參考如下要求

- 60 inches or more 24 point (字號24PT)
- 40 to 59 inches 18 point
- 30 to 39 inches 14 point
- less than 29 inches 10 point

Material: PE Thickness: 0.08mm
透气孔: OD: Ø5.0mm

Unless specified on the drawing, tolerances are per the follows:

.	± 1
.X	± 0.2
.XX	± 0.05

3RD



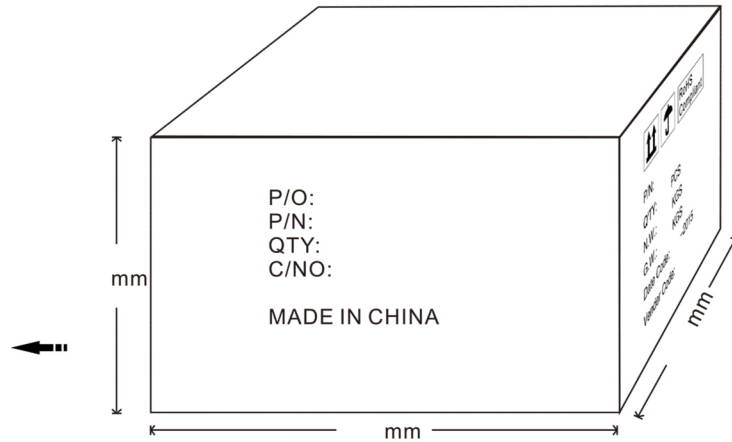
PART. NO		TITLE	PE Bag	
DEPARTMENT		DRAW	DATE	
SCALE		CHECKER	DATE	
UNIT	MM	APPROVAL	DATE	2020-01-17

NOTE: CARTON MATERIAL MUST BE A=A



REVISION INFORMATION			
Rev.	Rev. Date	Modified By	Brief Description

P/O: HPUE-201000109
P/N: 220320BK
Q'TY: 100 PCS
C/NO.:

MADE IN CHINA



CTN SIZE: 47X42X32CM

  **RoHS Compliant**

P/N: 220320BK
Q'TY: 300 PCS
N.W: 11 KGS
G.W: 13 KGS
Date Code:

Vender Code: PS01595



DRAWN BY	DATE: 2018/10/11	DESCRIPTION:
CHECKED BY	SHEET 2 of 2	ITEM NO.
APPROVED BY	SCALE 1:1	REV.01
UNIT:mm		