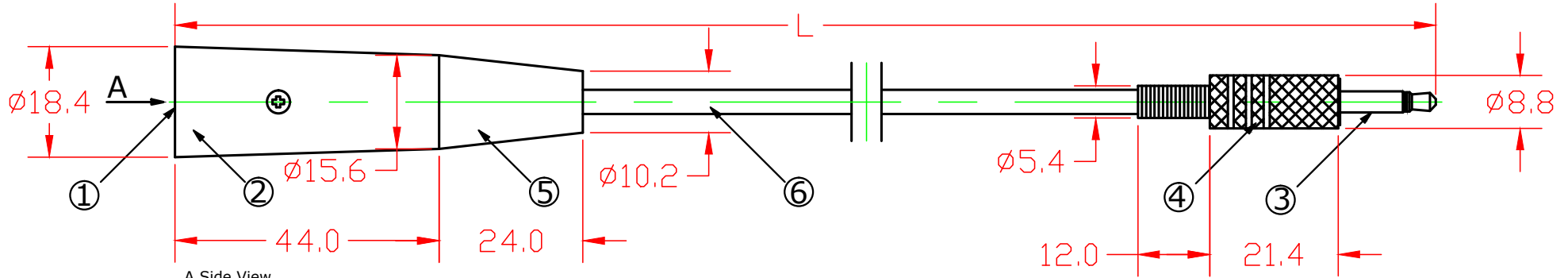
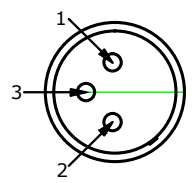


**RoHS  
Compliant**

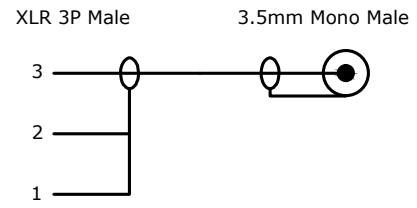
REVISION INFORMATION			
Rev.	Rev. Date	Modified By	Brief Description



A Side View



**CONNECTION**



LINK NO.	PART NO.	LENGTH(L)
203289		6Ft 1830±50
203290		10Ft 3050±80
203291		25Ft 7620±80

**ELECTRICAL TESTING**  
1. CONDUCTOR RESISTANCE: ≤5Ω 300V DC



DRAWN BY	DATE: 2014/04/12	DESCRIPTION: XLR 3P M to 3.5mm Mono M Cable
CHECKED BY	SHEET 1 of 1	ITEM NO. <b>203289</b>
APPROVED BY	SCALE 1:1	REV. 00 UNIT: mm

NO.	PART NAME	SPECIFICATION DESCRIPTION	Q'TY	UNIT
⑥	Cable	Cable (10/0.12) with 28/0.10 Sprial OD.: 4.0 Black PVC Jacket	1	PC
⑤	PVC	PVC Black	1	PC
④	Shell	Metal-Nickel Plated	1	PC
③	3.5mm MONO Male	3.5mm MONO Male-Nickel Plated	1	PC
②	Shell	Metal-Nickel Plated	1	PC
①	XLR 3P Male	XLR 3P Male	1	PC