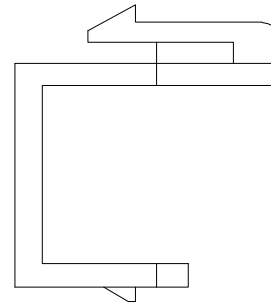
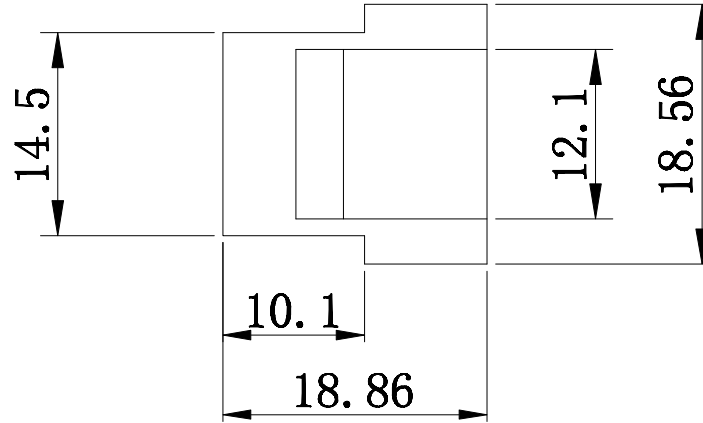
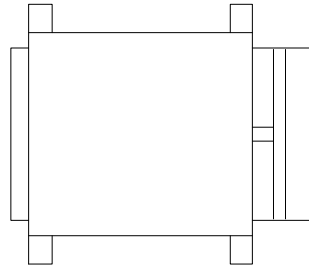


NOTE:ALL MATERIAL COMPLIANT ROHS STANDARD

REVISION INFORMATION

Rev.	Rev.Date	Modified By	Brief Description



**SPECIFICATION**

1. Operation Temperature : -10° C to 60° C.



③				
②				
①	<b>Housing</b>	<b>ABS</b>	<b>1</b>	<b>Pcs</b>
<b>NO.</b>	<b>PART NAME</b>	<b>SPECIFICATION DESCRIPTION</b>	<b>QT' Y</b>	<b>UNIT</b>

<b>DRAWN BY</b>	<b>DATE:</b> 2012/07/10	<b>DESCRIPTION:</b> Snap-in Keystone Wallplate Blank Insert White	
<b>CHECKED BY</b>	<b>SHEET</b> 1of1	<b>ITEM NO.</b> 101806	
<b>APPROVED BY</b>	<b>SCALE</b> 1:1	<b>REV.</b> 00	<b>UNIT:</b> mm